

Monthly Weather Summary in Thailand April 2022

Typically, climate in April of Thailand is often hot season. In April 2022, the mean temperature was below the normal in all parts especially in northeastern part was lower by 1.6 °C than normal. Generally cool weather with cold weather in some places in northeastern part during early month while the rest part of upper Thailand experienced cool weather in several areas as a result of the rather active high pressure area extended its ridge to cover upper Thailand during that time in addition with the westerly wind in the upper-level moved to cover the northern part on April 6-8. However, the heat low pressure cell covering the upper Thailand since mid-month resulted hot weather to upper Thailand and very hot weather in some places. For rainfall, there was periodically unusual rainfall over upper Thailand mainly during the second half of the month with thundershower and gusty wind in several areas that effected by the high pressure area from China extended its ridge to cover upper Thailand during mid- month in addition with the periodical prevailing of the southerly and southeasterly wind over upper Thailand which brought the moisture from the Gulf of Thailand and the westerly trough moving to cover the northern and northeastern parts on April 20-22. In southern part, the weather condition was dominated by the active easterly and northeasterly winds prevailing over the Gulf of Thailand and the southern part during early and mid-month cause of rainfall almost the month particularly during this time that received abundant and heavy rainfall with flash flood in several areas. Monthly rainfall was above normal in almost parts: northern part 13.8 mm (20%), northeastern part 3.7 mm (4%), central part 1.3 mm (2%) and southern part (east coast) 94.7 mm (119%) while it was below normal in eastern part 18.5 mm (18%) and southern part (west coast) 17.2 mm (11%). The average total rainfall over Thailand was 17 percent higher than normal. The details are as follows:

1 – 10 April : The high pressure area covered upper Thailand almost the period, it was rather active during early period. In addition, the westerly wind in the upper-level moved to cover the northern part on April 6-8 with the prevailing of easterly and northeasterly winds over upper Thailand during the second half of the period. These caused cool weather in the morning over several areas particularly in northeastern part which experienced generally cool weather with cold weather in some place during early period. However, the heat low pressure cell covered upper Thailand during late period causing temperature increased in several areas with hot weather during daytime. The highest maximum temperature was 39.5 °C at Thoen in Lampang province on April 6, the lowest minimum temperature was 12.4 °C at Umphang in Tak province on April 5 and dropped to 7.3 °C in the area of mountain top at Doi Inthanon, Chom Thong in Chiang Mai province on April 4. For rainfall, upper Thailand received unusual rainfall mainly during early period with heavy rainfall in several areas in northeastern part then decreasing both amount and distribution of rainfall that obtained isolated rain in northern part while no rainfall reported in the rest parts. The maximum daily rainfall was 180.9 millimeters at Nam Yuen in Ubon Ratchathani on April 1. Gusty wind were reported in Pichit province on April 1, at Yasothon province on April 2 and Chiang Rai on April 9. For southern part, the

easterly and southeasterly winds which prevailed over the Gulf of Thailand and the southern part were moderate to rather active during early and mid-period causing fairly widespread rain during this period especially along east coast that received heavy rainfall in several area with the highest daily rainfall was 183.8 millimeters at Mueang in Nakhon Si Thammarat province on April 4. Gusty wind occurred at Trang province on April 1 and floods were reported at Narathiwat and Nakhon Si Thammarat provinces on April 4, Phattalung and Chumphon province on April 5.

11 – 20 April : The heat low pressure cell covered upper Thailand during early and mid-period accompanied with the prevailing of the southerly and southeasterly winds over the mentioned areas almost the period. These caused hot weather nearly the whole areas with very hot weather in some place. The highest maximum temperature was 41.5 °C at Thoen in Lampang province on April 13. Besides, the high pressure areas from China extended its ridge to cover upper Thailand during late period in addition with westerly trough moved to cover the northern part on the last day of the period causing increased rainfall to scattered to fairly widespread rain with heavy to very heavy rainfall in some places. The highest daily rainfall of 145.5 millimeters was recorded at Si Nakharin Dam, Si Sawat in Kanchanaburi province on April 18. Gusty wind was reported at Kamphaeng Phet, Phayao, Lamphun, Phitchit, Mae Hong Son, Nan, Lampang, Chiang Mai, Tak, Yasothon, Udon Thani, Sakon Nakhon, Mahasarakham, Chaiyaphum, Kalasin, Nakhon Ratchasima, Ang Thong, Singburi, Phra Nakhon Si Ayutthaya, Uthai Thani, Chai Nat, Nakhon Nayok and Prachinburi provinces during late period. Flash flood occurred at Chaiyaphum province on April 18. For southern part, isolated to scattered rain was found during early and mid-periods and then increasing in distribution of rainfall that obtained scattered to fairly widespread rain effect by the southeasterly wind which prevailed over the Andaman Sea, southern part and the Gulf of Thailand weakened during mid-period and the westerly wind prevailed over the Andaman Sea, southern part and the Gulf of Thailand during this period after that the prevailing of the easterly and southeasterly winds over the mentioned areas had strengthened during late period. The highest daily rainfall of 115.0 millimeters was measured at Khuan Khanun in Phatthalung on April 14.

21 – 30 April : The heat low pressure cell covered upper Thailand almost the period in addition with the southerly and the southeasterly winds which prevailed over the mentioned areas strengthened during late period. Beside, the westerly trough moved to cover the northern and northeastern parts during early period, the weather condition was hot weather nearly the whole areas with very hot weather in several areas during mid-period. The highest maximum temperature was 42.6 °C at Thoen in Lampang province on April 27. For rainfall, it was found over upper Thailand almost the period especially during late period which increasing both amount and distribution of rainfall. The maximum daily rainfall in upper Thailand was 150.5 millimeters at Bang Len in Nakhon Pathom province on April 28. Gusty wind occurred at Sukhothai and Khon Kaen provinces on April 22, at Sakon Nakhon province on April 24, at Mukdahan province on April 25, at Phrae, Lamphun, Phetchabun, Nakhon Phanom, Chaiyaphum and Yasothon provinces on April 26, at Mukdahan, Kalasin, Mahasarakham and Amnat Charoen provinces on April 27, at Tak, Mae Hong Son, Pichit, Khon Kaen, Sakon Nakhon, Nakhon Ratchasima, Burirum, Lop Buri,

Singburi, Saraburi, Phra Nakhon Si Ayutthaya and Chanthaburi provinces on April 28. In southern part, the prevailing of the easterly and southeasterly wind over the Andaman Sea, southern part and the Gulf of Thailand during the first half of the period then westerly wind prevailed over the mentioned areas causing isolated to scattered rain almost the period along east coast while scattered to fairly widespread light to moderate rain almost the period along west coast. the highest daily rainfall was 95.0 millimeters at Tha Sae in Chumphon province on April 30 and gusty wind was reported at Phang Nga province on April 30

Note : Rainfall, temperatures and natural disasters in this report were updated up to May 6, 2022.

Climatological Center
Meteorological Development Bureau
Meteorological Department

Monthly Current Report
Rainfall and Accumulative Rainfall
April 2022

Northern Thailand

Station	Temperature (°c)		Rainfall (mm)		Accumulative rainfall (mm) Since 1 January	
	Mean	Above or below normal	Actual	Above or below normal	Actual	Above or below normal
Chiang Rai	27.0	-0.2	92.7	0.1	257.1	101.5
Mae Hong Son	29.8	-0.5	81.0	21.6	131.3	36.2
Phayao	27.5	-1.1	251.6	169.3	395.0	256.2
Chiang Mai	28.9	-0.6	200.7	146.4	308.3	212.7
Tha Wang Pha	27.7	-0.7	93.2	-4.0	426.5	267.7
Nan	28.6	-0.5	72.3	-25.3	319.0	161.0
Lamphun	29.0	-1.1	69.4	17.0	190.2	107.6
Lampang	30.1	-0.1	65.4	-3.9	144.3	23.9
Mae Sariang	29.6	-0.7	94.3	34.9	140.4	45.3
Phrae	29.4	-0.7	81.4	-1.1	248.3	108.9
Uttaradit	30.4	-0.4	107.5	36.0	214.3	92.7
Bhumibol Dam	30.6	-0.3	30.3	-34.4	166.5	56.4
Tak	30.4	-1.1	126.1	67.9	237.6	144.3
Mae Sot	29.7	0.3	10.7	-25.4	114.1	42.8
Umphang	25.9	-0.3	47.2	-51.6	284.1	110.3
Phitsanulok	30.2	-0.6	77.2	18.0	211.7	100.0
Lom Sak	28.6	-0.8	15.4	-47.7	123.2	-4.5
Phetchabun	29.0	-1.1	40.2	-35.7	176.9	24.1
Wichian Buri	29.3	-1.2	50.9	-42.9	358.4	189.4
Kamphaeng Phet	30.1	-0.5	75.6	19.4	244.4	129.7
Over the area	29.1	-0.6	84.2	13.8 20%	234.6	111.4 90%

Northeastern Thailand

Station	Temperature (°c)		Rainfall (mm)		Accumulative rainfall (mm) Since 1 January	
	Mean	Above or below normal	Actual	Above or below normal	Actual	Above or below normal
Nong Khai	28.5	-1.2	120.4	41.0	488.3	337.2
Loei	27.1	-1.4	76.5	-17.7	281.7	127.0
Udon Thani	28.7	-1.2	30.1	-41.2	92.0	-56.8
Nakhon Phanom	27.8	-1.3	119.9	20.0	198.8	12.5
Sakon Nakhon	27.3	-1.9	30.8	-61.6	134.0	-48.2
Mukdahan	27.8	-1.8	54.6	-13.1	160.2	28.9
Khon Kaen	28.4	-1.5	79.3	-15.3	175.7	19.8
Kosum Phisai	29.1	-1.1	31.7	-61.3	97.1	-64.4
Roi Et	28.3	-1.6	43.2	-36.5	178.9	38.0
Chaiyaphum	28.7	-1.4	73.4	-13.8	240.9	87.2
Ubon Ratchathani	27.8	-2.3	134.8	52.2	249.3	123.9
Tha Tum	27.9	-2.4	76.7	-5.8	153.7	8.0
Surin	28.1	-1.8	142.6	56.7	402.3	253.0
Nakhon Ratchasima	28.4	-1.7	94.3	17.4	171.7	27.3
Chok Chai	28.3	-1.4	120.3	46.0	249.8	118.6
Nang Rong	27.7	-1.8	180.0	92.7	266.0	111.0
Over the area	28.1	-1.6	88.0	3.7 4%	221.3	70.2 46%

- NOTES :
- 1) Mean temperature is the average of daily dry-bulb temperature
 - 2) "T" is trace, rainfall amount less than 0.1 mm.
 - 3) "blank" is incomplete data.
 - 4) Temperature and rainfall are preliminary data.

Monthly Current Report
Rainfall and Accumulative Rainfall
April 2022

Central Thailand

Station	Temperature (°c)		Rainfall (mm)		Accumulative rainfall (mm) Since 1 January	
	Mean	Above or below normal	Actual	Above or below normal	Actual	Above or below normal
Nakhon Sawan	30.7	-0.8	82.6	20.0	245.8	129.8
Bua Chum	29.1	-1.3	38.1	-40.6	266.5	126.6
Lop Buri	30.3	-0.2	99.7	20.5	161.1	26.7
Suphan Buri	30.4	-0.3	136.8	83.5	172.6	81.0
Thong Pha Phum	29.3	-0.6	119.3	24.5	293.4	126.8
Kanchanaburi	30.6	-0.5	16.1	-50.3	256.6	125.0
Bangkok Airport	29.9	-0.7	116.8	25.1	316.6	145.1
Bangkok Metropolis	30.6	-0.1	20.5	-72.1	245.0	56.4
Over the area	30.1	-0.6	78.7	1.3 2%	244.7	102.1 72%

Eastern Thailand

Station	Temperature (°c)		Rainfall (mm)		Accumulative rainfall (mm) Since 1 January	
	Mean	Above or below normal	Actual	Above or below normal	Actual	Above or below normal
Prachin Buri	30.0	-0.4	47.8	-57.2	195.1	18.2
Kabin Buri	28.7	-1.0	105.6	2.6	332.6	140.3
Aranyaprathet	29.4	-0.9	112.1	19.8	356.7	170.5
Chon Buri	30.0	-0.4	130.8	50.9	301.1	133.4
Ko Sichang	28.8	-1.0	45.6	-26.2	138.8	-20.5
Pattaya	29.2	-0.2	37.2	-30.3	197.0	46.8
Sattahip	28.9	-0.9	85.7	-5.0	493.0	288.4
Rayong	29.5	-0.5	25.3	-59.2	174.1	-42.4
Chanthaburi	28.7	-0.2	129.1	1.0	379.0	103.7
Khlong Yai	28.7	0.1	110.4	-81.6	458.2	-3.5
Over the area	29.2	-0.5	83.0	-18.5 -18%	302.6	83.5 38%

- NOTES :
- 1) Mean temperature is the average of daily dry-bulb temperature
 - 2) "T" is trace, rainfall amount less than 0.1 mm.
 - 3) "blank" is incomplete data.
 - 4) Temperature and rainfall are preliminary data.

Monthly Current Report
Rainfall and Accumulative Rainfall
April 2022

Southern Thailand, east coast

Station	Temperature (°c)		Rainfall (mm)		Accumulative rainfall (mm) Since 1 January	
	Mean	Above or below normal	Actual	Above or below normal	Actual	Above or below normal
Phetchaburi	29.3	-0.6	56.8	17.0	290.7	186.2
Hua Hin	29.2	-0.4	32.4	-13.9	258.3	122.7
Prachuap Khiri Khan	29.5	0.1	6.5	-50.8	407.8	207.5
Chumphon	28.5	-0.3	149.5	57.3	566.0	215.6
Surat Thani	27.9	-0.6	217.1	137.5	591.0	360.2
Ko Samui	28.6	-0.5	275.5	192.6	682.4	293.5
Nakhon Si Thammarat	28.0	-0.4	495.0	388.0	1184.6	599.7
Songkhla	28.8	-0.1	242.5	156.7	621.5	282.2
Hat Yai Airport	27.8	-0.3	132.2	15.8	534.8	222.9
Pattani Airport	28.2	-0.2	80.1	-3.1	550.9	283.4
Narathiwat	28.2	-0.1	230.7	144.4	973.5	501.3
Over the area	28.5	-0.4	174.4	94.7 119%	605.6	297.7 97%

Southern Thailand, west coast

Station	Temperature (°c)		Rainfall (mm)		Accumulative rainfall (mm) Since 1 January	
	Mean	Above or below normal	Actual	Above or below normal	Actual	Above or below normal
Ranong	28.3	-0.5	119.2	-35.0	495.9	203.5
Takua Pa	28.0	-0.3	189.0	-32.0	630.2	157.0
Phuket	29.9	0.3	102.2	-32.9	331.5	42.5
Phuket Airport	28.7	-0.2	104.4	-37.7	391.5	34.7
Ko Lanta	28.5	-0.5	143.4	22.0	377.4	133.9
Trang Airport	27.8	-0.7	142.9	-6.1	532.5	202.1
Satun	28.1	-0.4	208.7	1.1	651.8	227.1
Over the area	28.5	-0.3	144.3	-17.2 -11%	487.3	143.0 42%

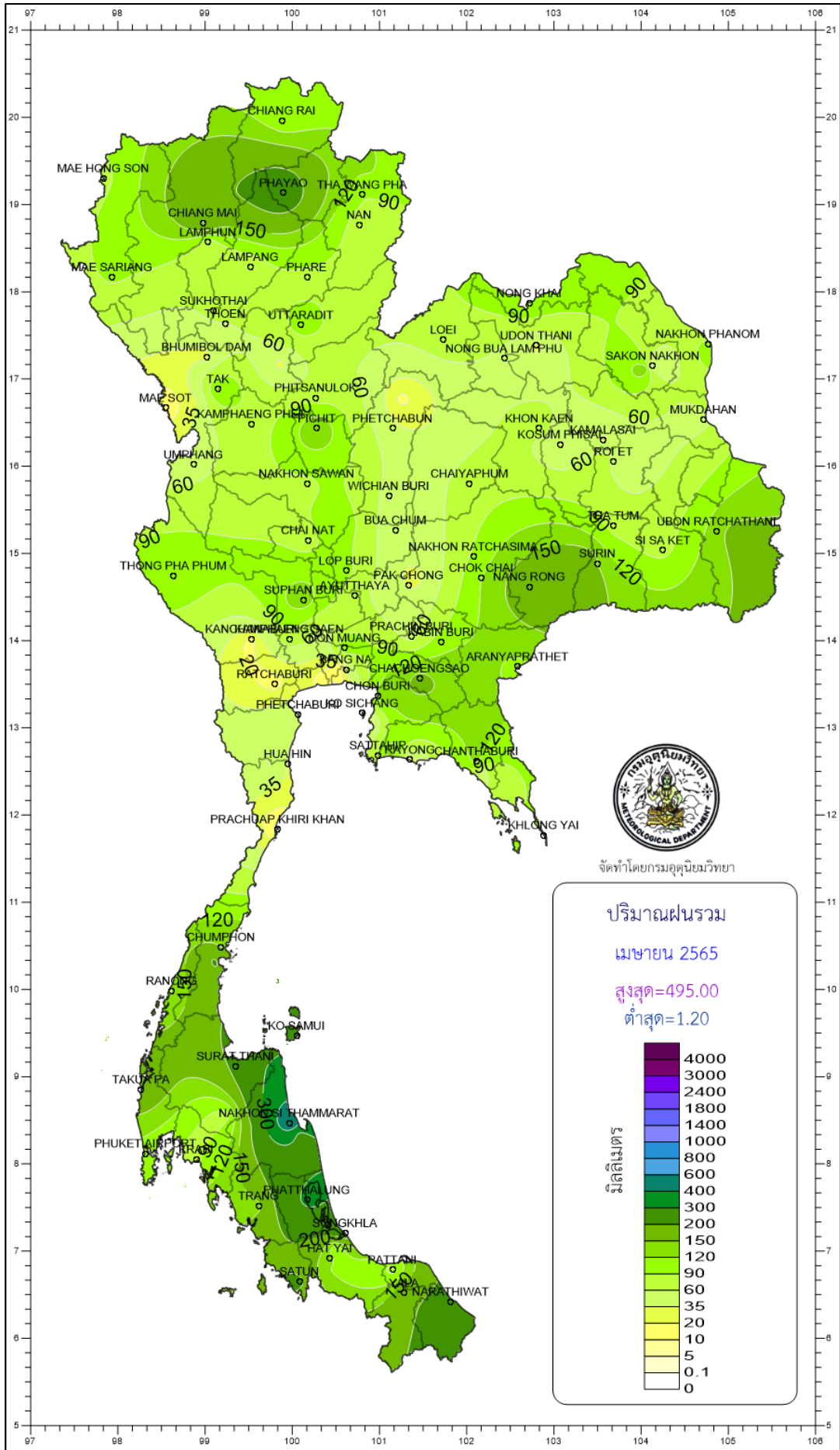
- NOTES :
- 1) Mean temperature is the average of daily dry-bulb temperature
 - 2) "T" is trace, rainfall amount less than 0.1 mm.
 - 3) "blank" is incomplete data.
 - 4) Temperature and rainfall are preliminary data.

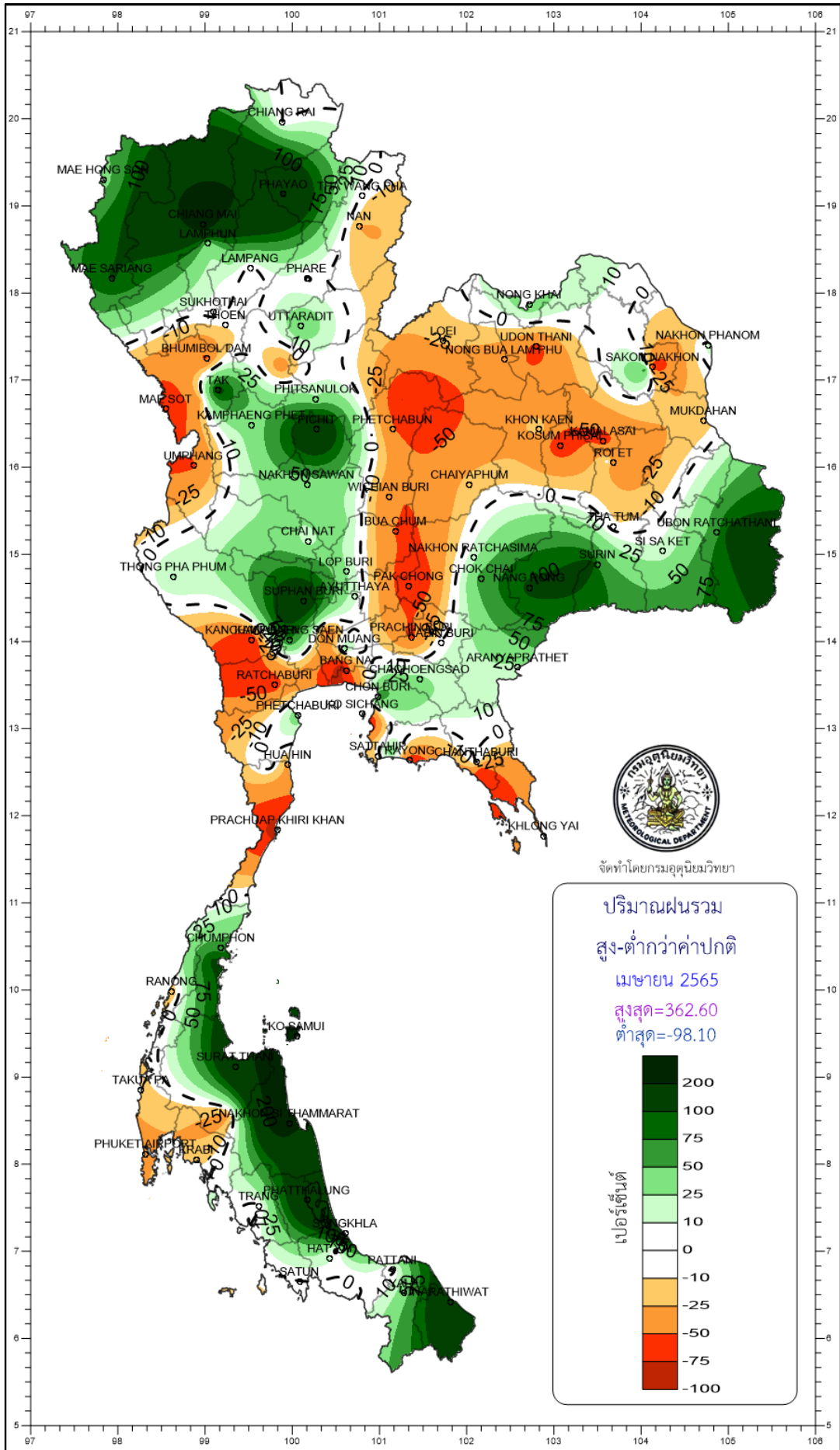
Monthly Current Report

April 2022

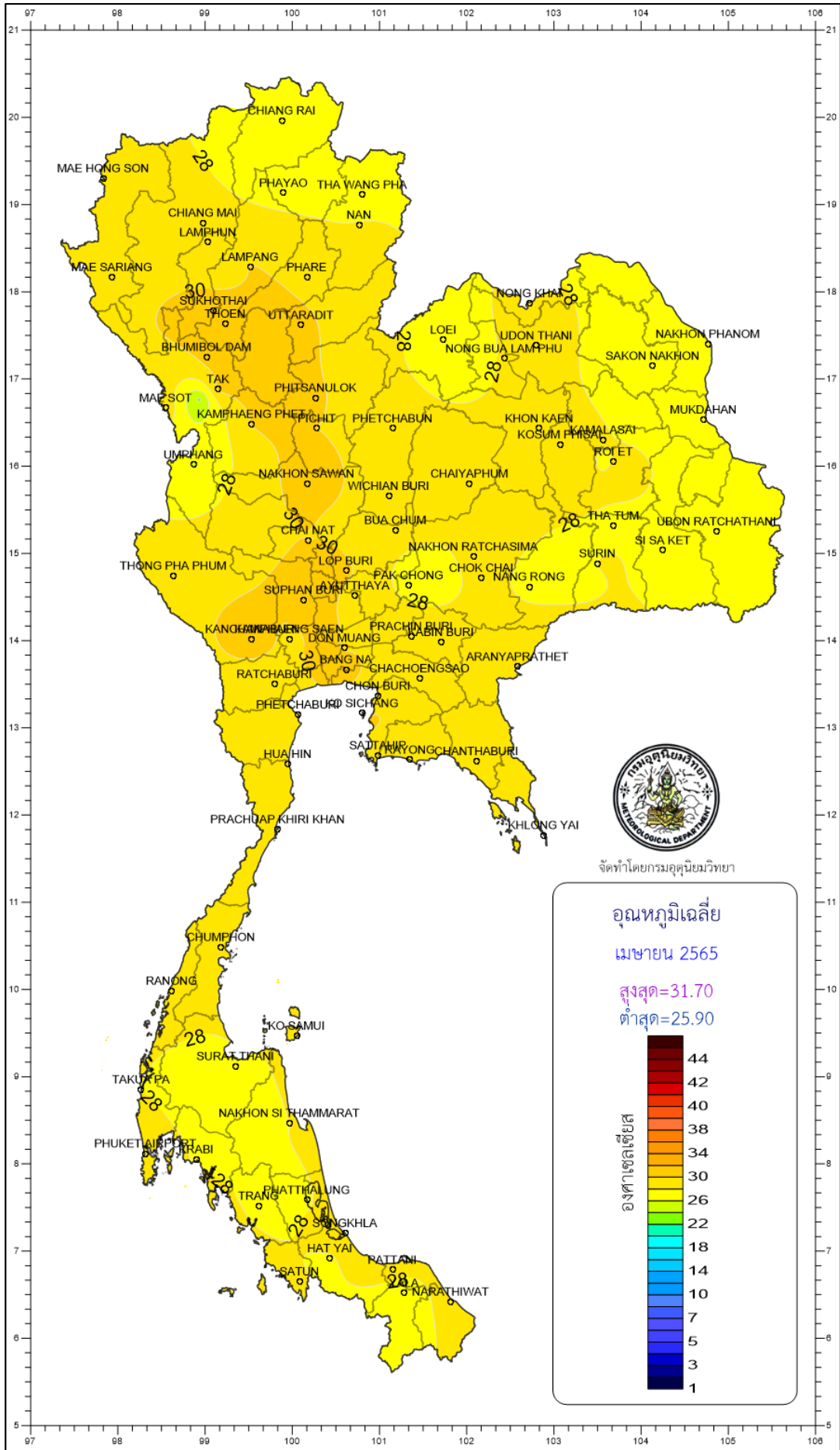
Region	Station	Temperature (°c)		Rainfall (mm)		Accumulative rainfall (mm) Since 1 January	
		Mean	Above or below normal	Actual	Above or below normal	Actual	Above or below normal
North	Chiang Rai	27.0	-0.2	92.7	0.1	257.1	101.5
	Mae Hong Son	29.8	-0.5	81.0	21.6	131.3	36.2
	Phayao	27.5	-1.1	251.6	169.3	395.0	256.2
	Chiang Mai	28.9	-0.6	200.7	146.4	308.3	212.7
	Tha Wang Pha	27.7	-0.7	93.2	-4.0	426.5	267.7
	Nan	28.6	-0.5	72.3	-25.3	319.0	161.0
	Lamphun	29.0	-1.1	69.4	17.0	190.2	107.6
	Lampang	30.1	-0.1	65.4	-3.9	144.3	23.9
	Mae Sariang	29.6	-0.7	94.3	34.9	140.4	45.3
	Phrae	29.4	-0.7	81.4	-1.1	248.3	108.9
	Uttaradit	30.4	-0.4	107.5	36.0	214.3	92.7
	Bhumibol Dam	30.6	-0.3	30.3	-34.4	166.5	56.4
	Tak	30.4	-1.1	126.1	67.9	237.6	144.3
	Mae Sot	29.7	0.3	10.7	-25.4	114.1	42.8
	Umphang	25.9	-0.3	47.2	-51.6	284.1	110.3
	Phitsanulok	30.2	-0.6	77.2	18.0	211.7	100.0
	Lom Sak	28.6	-0.8	15.4	-47.7	123.2	-4.5
	Phetchabun	29.0	-1.1	40.2	-35.7	176.9	24.1
	Wichian Buri	29.3	-1.2	50.9	-42.9	358.4	189.4
Kamphaeng Phet	30.1	-0.5	75.6	19.4	244.4	129.7	
Northeast	Nong Khai	28.5	-1.2	120.4	41.0	488.3	337.2
	Loei	27.1	-1.4	76.5	-17.7	281.7	127.0
	Udon Thani	28.7	-1.2	30.1	-41.2	92.0	-56.8
	Nakhon Phanom	27.8	-1.3	119.9	20.0	198.8	12.5
	Sakon Nakhon	27.3	-1.9	30.8	-61.6	134.0	-48.2
	Mukdahan	27.8	-1.8	54.6	-13.1	160.2	28.9
	Khon Kaen	28.4	-1.5	79.3	-15.3	175.7	19.8
	Kosum Phisai	29.1	-1.1	31.7	-61.3	97.1	-64.4
	Roi Et	28.3	-1.6	43.2	-36.5	178.9	38.0
	Chaiyaphum	28.7	-1.4	73.4	-13.8	240.9	87.2
	Ubon Ratchathani	27.8	-2.3	134.8	52.2	249.3	123.9
	Tha Tum	27.9	-2.4	76.7	-5.8	153.7	8.0
	Surin	28.1	-1.8	142.6	56.7	402.3	253.0
	Nakhon Ratchasima	28.4	-1.7	94.3	17.4	171.7	27.3
Chok Chai	28.3	-1.4	120.3	46.0	249.8	118.6	
Nang Rong	27.7	-1.8	180.0	92.7	266.0	111.0	
Central	Nakhon Sawan	30.7	-0.8	82.6	20.0	245.8	129.8
	Bua Chum	29.1	-1.3	38.1	-40.6	266.5	126.6
	Lop Buri	30.3	-0.2	99.7	20.5	161.1	26.7
	Suphan Buri	30.4	-0.3	136.8	83.5	172.6	81.0
	Thong Pha Phum	29.3	-0.6	119.3	24.5	293.4	126.8
	Kanchanaburi	30.6	-0.5	16.1	-50.3	256.6	125.0
	Bangkok Airport	29.9	-0.7	116.8	25.1	316.6	145.1
	Bangkok Metropolis	30.6	-0.1	20.5	-72.1	245.0	56.4
East	Prachin Buri	30.0	-0.4	47.8	-57.2	195.1	18.2
	Kabin Buri	28.7	-1.0	105.6	2.6	332.6	140.3
	Aranyaprathet	29.4	-0.9	112.1	19.8	356.7	170.5
	Chon Buri	30.0	-0.4	130.8	50.9	301.1	133.4
	Ko Sichang	28.8	-1.0	45.6	-26.2	138.8	-20.5
	Pattaya	29.2	-0.2	37.2	-30.3	197.0	46.8
	Sattahip	28.9	-0.9	85.7	-5.0	493.0	288.4
	Rayong	29.5	-0.5	25.3	-59.2	174.1	-42.4
	Chanthaburi	28.7	-0.2	129.1	1.0	379.0	103.7
	Khlung Yai	28.7	0.1	110.4	-81.6	458.2	-3.5
South (East Coast)	Phetchaburi	29.3	-0.6	56.8	17.0	290.7	186.2
	Hua Hin	29.2	-0.4	32.4	-13.9	258.3	122.7
	Prachuap Khiri Khan	29.5	0.1	6.5	-50.8	407.8	207.5
	Chumphon	28.5	-0.3	149.5	57.3	566.0	215.6
	Surat Thani	27.9	-0.6	217.1	137.5	591.0	360.2
	Ko Samui	28.6	-0.5	275.5	192.6	682.4	293.5
	Nakhon Si Thammarat	28.0	-0.4	495.0	388.0	1184.6	599.7
	Songkhla	28.8	-0.1	242.5	156.7	621.5	282.2
	Hat Yai Airport	27.8	-0.3	132.2	15.8	534.8	222.9
	Pattani Airport	28.2	-0.2	80.1	-3.1	550.9	283.4
	Narathiwat	28.2	-0.1	230.7	144.4	973.5	501.3
South (West Coast)	Ranong	28.3	-0.5	119.2	-35.0	495.9	203.5
	Takua Pa	28.0	-0.3	189.0	-32.0	630.2	157.0
	Phuket	29.9	0.3	102.2	-32.9	331.5	42.5
	Phuket Airport	28.7	-0.2	104.4	-37.7	391.5	34.7
	Ko Lanta	28.5	-0.5	143.4	22.0	377.4	133.9
	Trang Airport	27.8	-0.7	142.9	-6.1	532.5	202.1
	Satun	28.1	-0.4	208.7	1.1	651.8	227.1
	Over the area	28.9	-0.7	103.9	14.8	323.4	128.5
					17%		66%

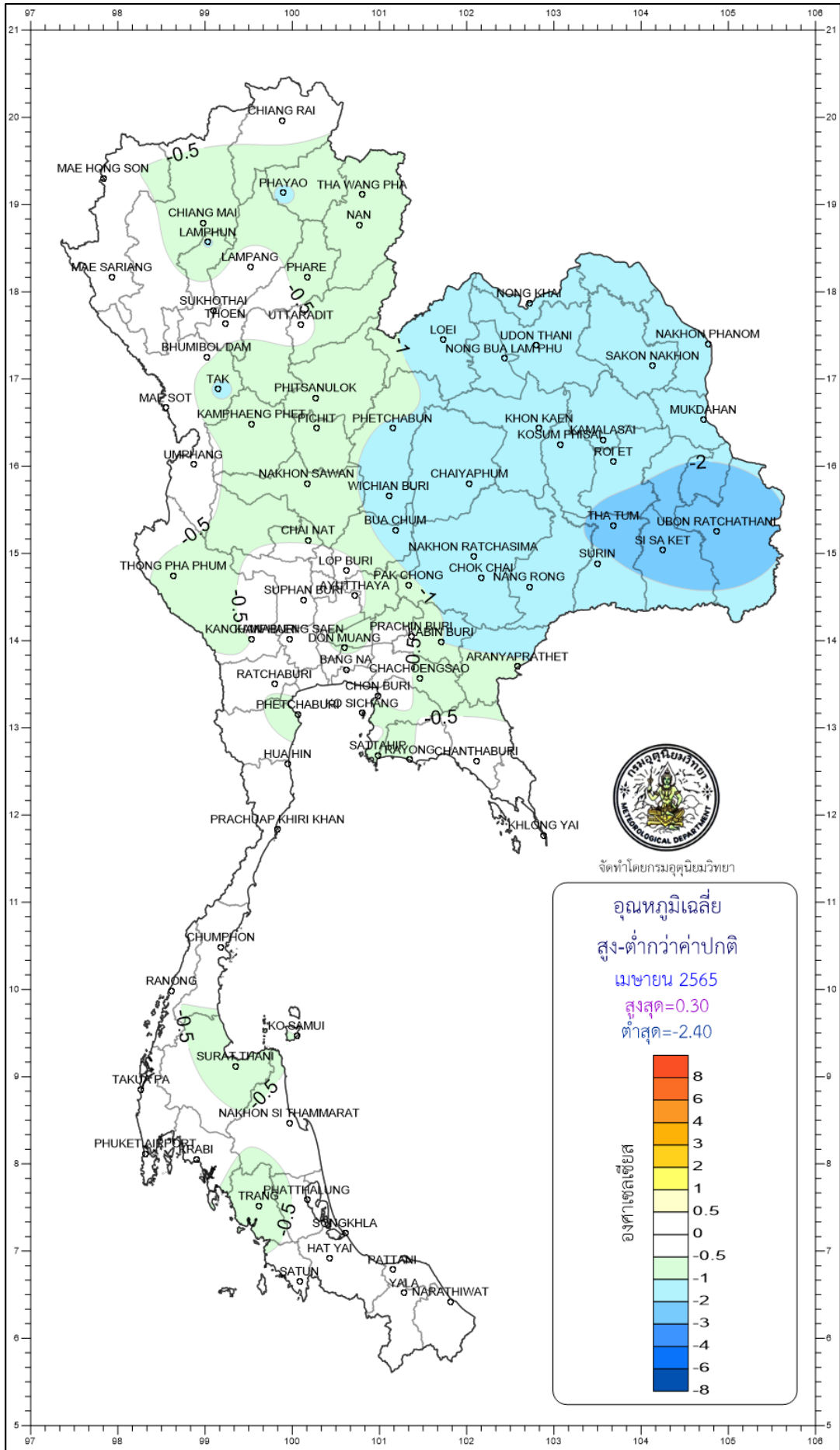
- NOTES :
- 1) Mean temperature is the average of daily dry-bulb temperature
 - 2) "T" is trace, rainfall amount less than 0.1 mm.
 - 3) "blank" is incomplete data.
 - 4) Temperature and rainfall are preliminary data.



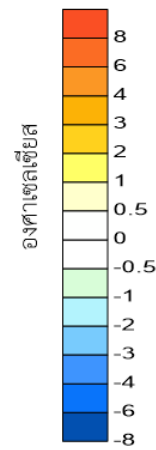


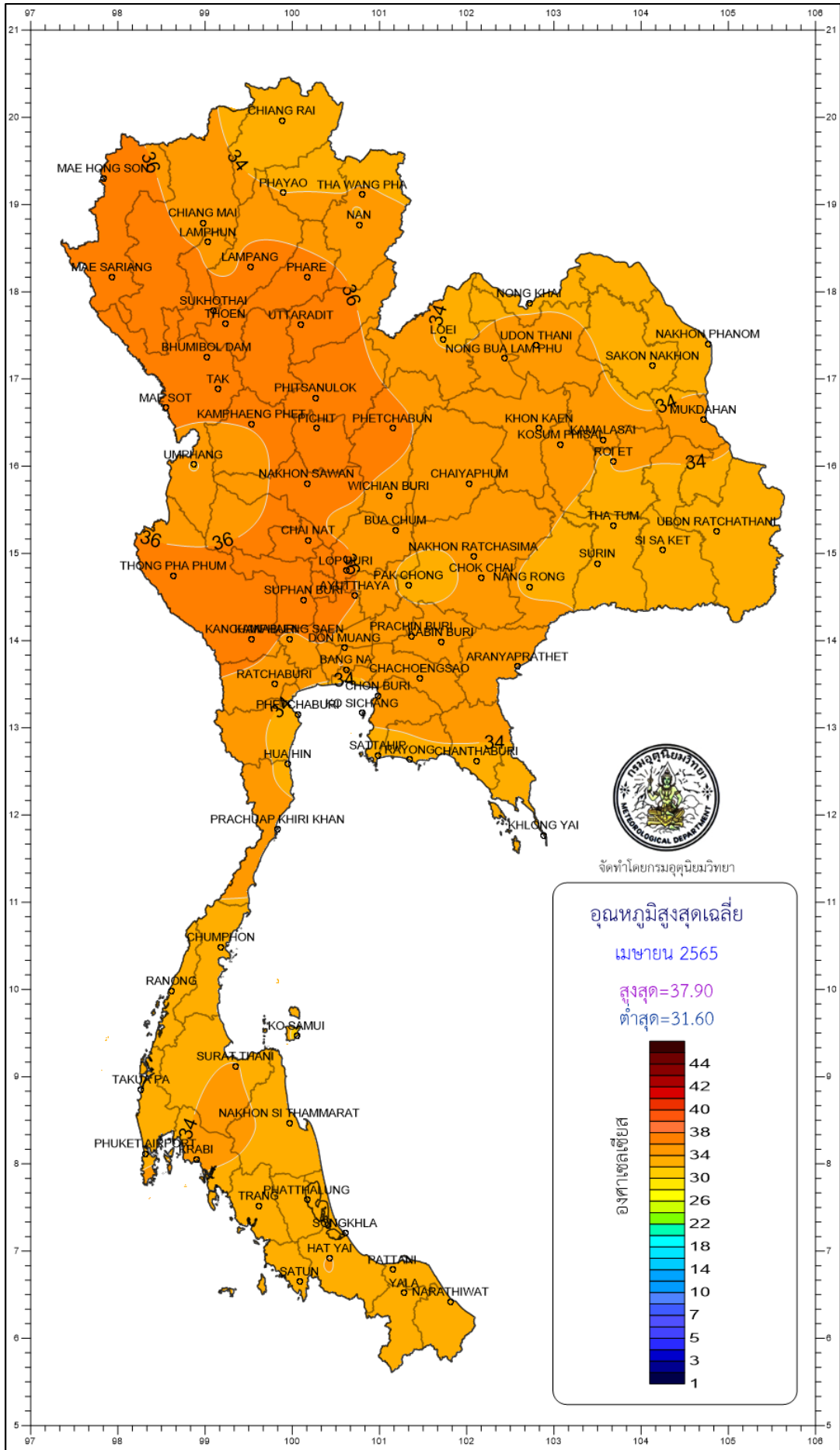
จัดทำโดยกรมอุตุนิยมวิทยา





จัดทำโดยกรมอุตุนิยมวิทยา



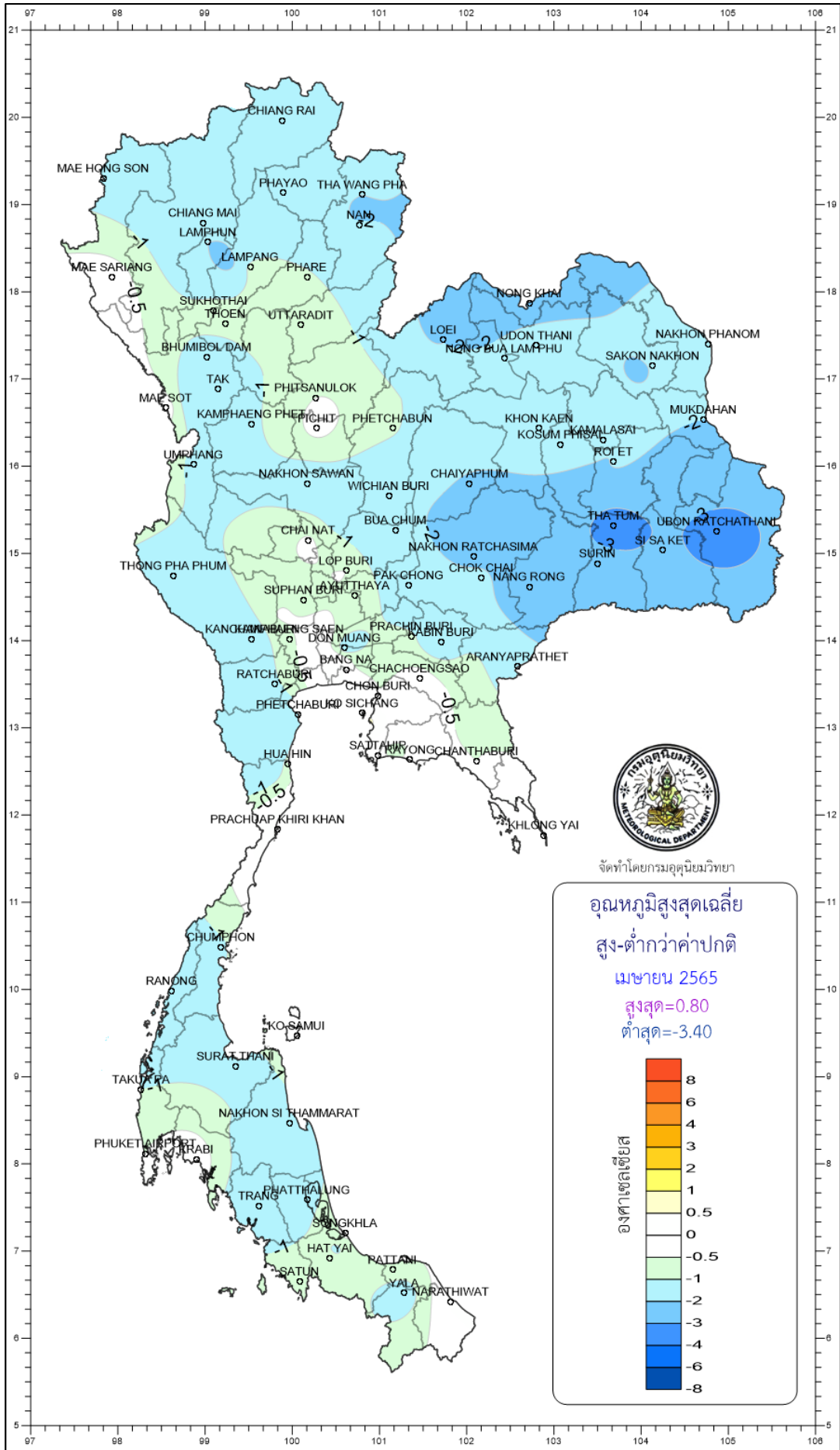


97 98 99 100 101 102 103 104 105 106 108

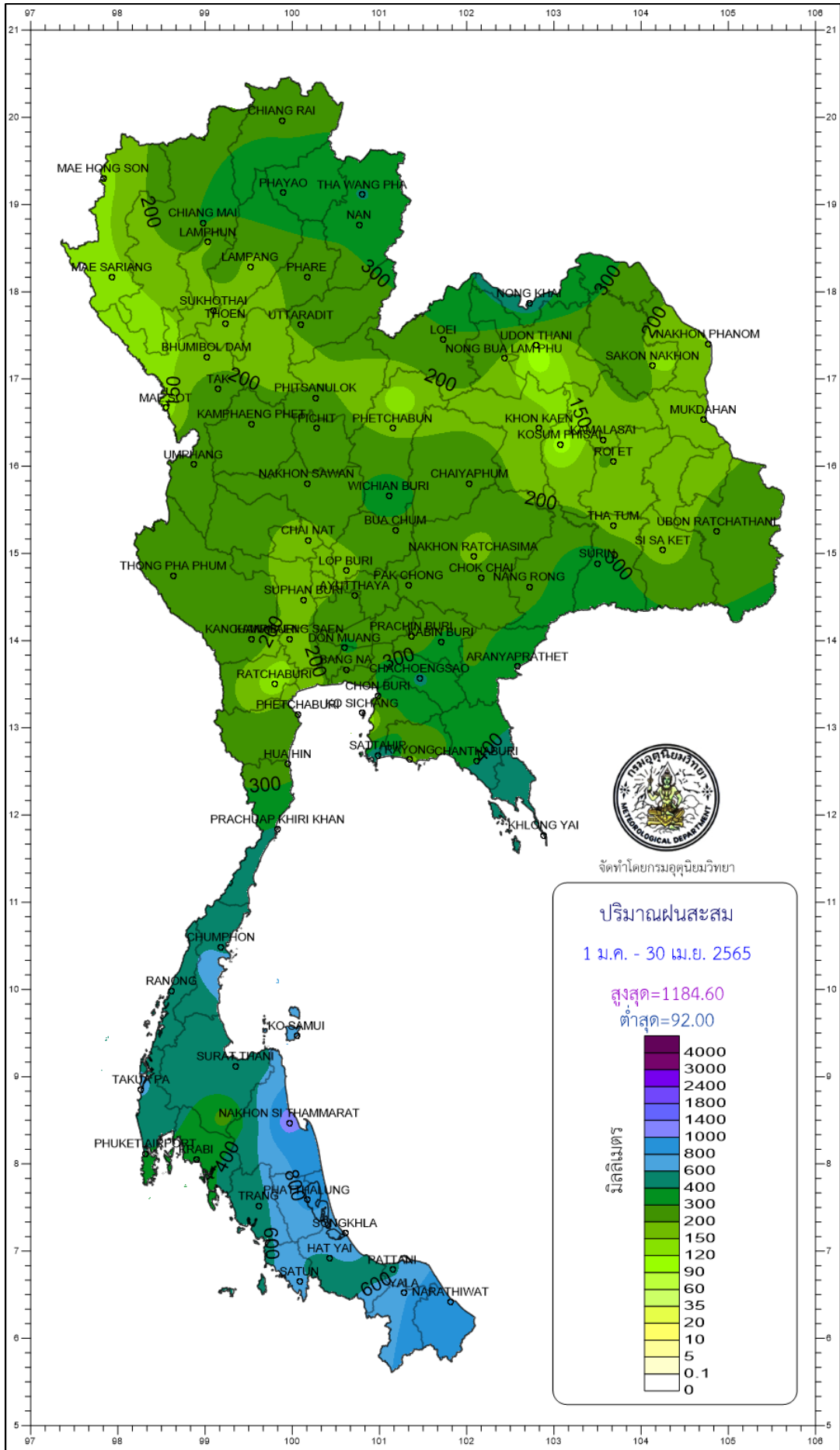
21 20 19 18 17 16 15 14 13 12 11 10 9 8 7 6 5

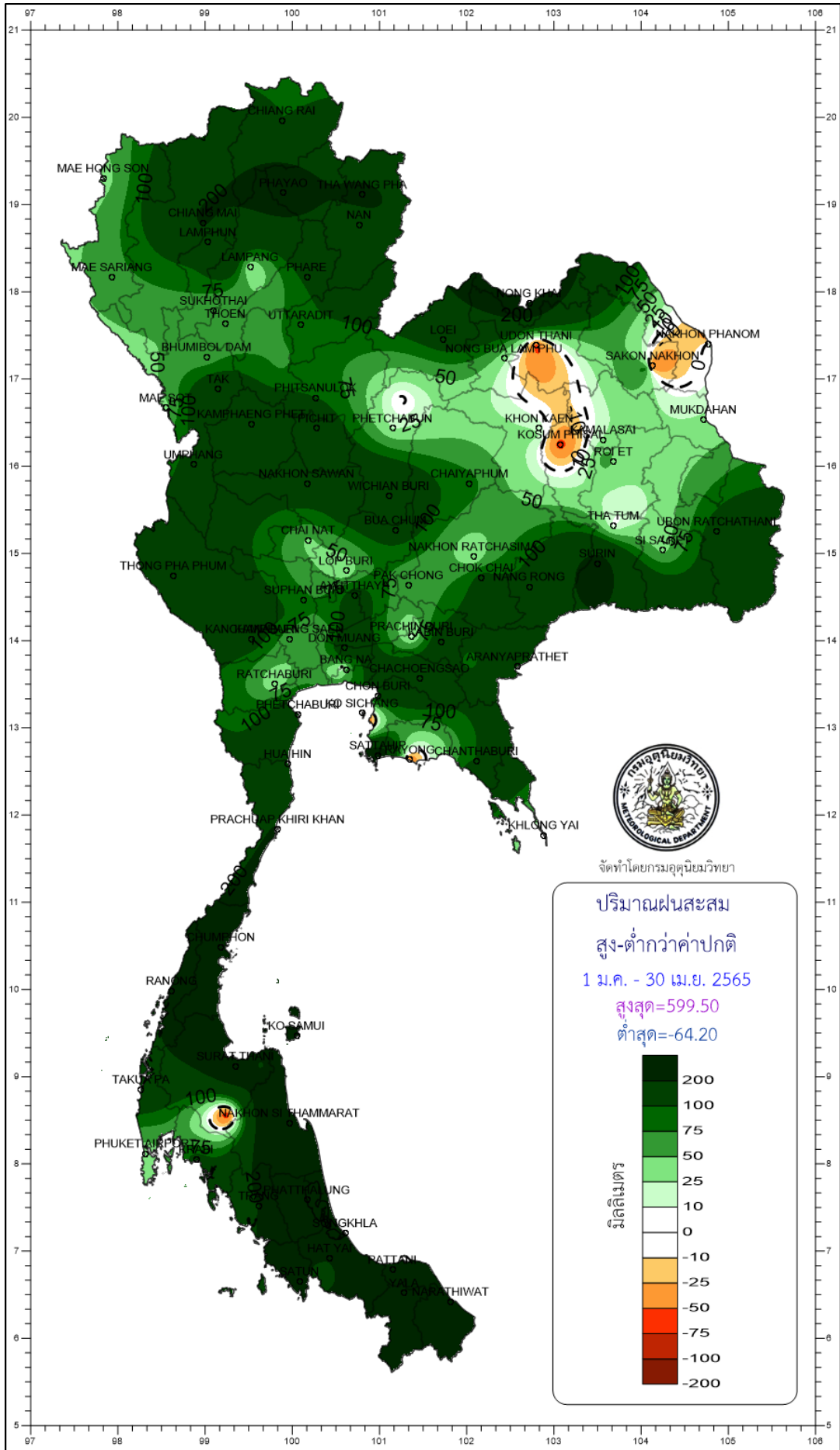
97 98 99 100 101 102 103 104 105 106 108

21 20 19 18 17 16 15 14 13 12 11 10 9 8 7 6 5



จัดทำโดยกรมอุตุนิยมวิทยา





จัดทำโดยกรมอุตุนิยมวิทยา